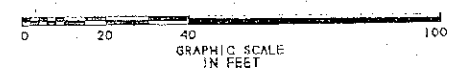


RIO DEL REY SHORES REPLAT

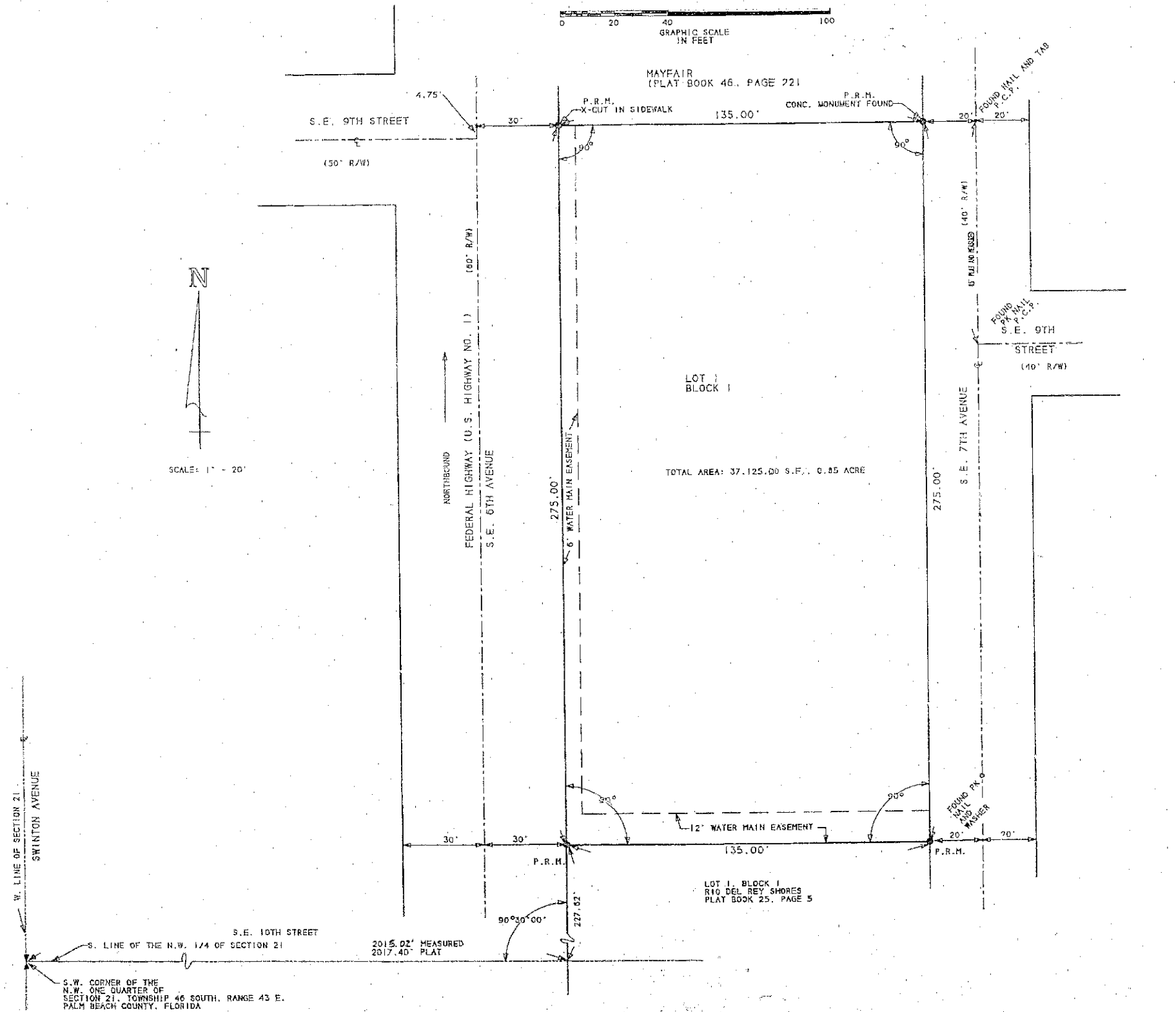
A SUBDIVISION IN SECTION 21, TOWNSHIP 46 SOUTH, RANGE 43 EAST,
DELRAY BEACH, PALM BEACH COUNTY, FLORIDA
BEING A REPLAT OF LOT 7 AND LOT 8, BLOCK 2, RIO DEL REY SHORES, A SUBDIVISION
AS RECORDED IN PLAT BOOK 25, PAGE 5, IN THE PUBLIC RECORDS OF PALM BEACH COUNTY,
FLORIDA,
AND ALSO INCLUDING A PORTION OF THE ABANDONED RIGHT-OF-WAY OF S.E. 9TH COURT.
DECEMBER 3, 1997

PREPARED BY: BURLISON A. GENTRY
GENTRY ENGINEERING AND LAND SURVEYING, INC.
P.O. BOX 243 DELRAY BEACH, FL. 33447-0243

SHEET 2 OF 2



SCALE: 1" = 20'



TOTAL AREA: 37,125.00 S.F., 0.85 ACRE

LOT 1, BLOCK 1
RIO DEL REY SHORES
PLAT BOOK 25, PAGE 5

SURVEYOR'S LEGEND:

- P.R.M. - INDICATES PERMANENT REFERENCE MONUMENT
- P.C.P. - INDICATES PERMANENT CONTROL POINT
- CL - INDICATES CENTER LINE
- R/W - INDICATES RIGHT-OF-WAY
- - - - - INDICATES NOT TO SCALE
- S.F. - INDICATES SQUARE FEET

SURVEYOR'S NOTES:

1. THE CITY OF DELRAY HAS RIGHT OF ACCESS FOR EMERGENCY AND MAINTENANCE PURPOSES.
2. THERE MAY BE ADDITIONAL RESTRICTIONS THAT ARE NOT RECORDED ON THIS PLAT THAT MAY BE FOUND IN THE PUBLIC RECORDS OF PALM BEACH COUNTY, FLORIDA.
3. BOUNDARY PLAT, EXISTING IMPROVEMENTS NOT SHOWN.

W. LINE OF SECTION 21
SWINTON AVENUE
S.E. 10TH STREET
S. LINE OF THE N.W. 1/4 OF SECTION 21
2015.02' MEASURED
2017.40'
S.W. CORNER OF THE
N.W. ONE QUARTER OF
SECTION 21, TOWNSHIP 46 SOUTH, RANGE 43 E.
PALM BEACH COUNTY, FLORIDA